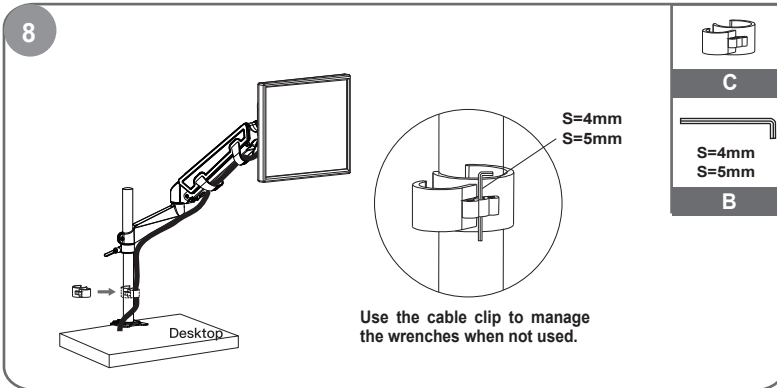


Use a 5mm hex wrench to adjust the damp for Tilt and Swivel. Turn counter-clockwise to reduce damping and clockwise to increase damping.



Use the cable clip to manage the wrenches when not used.

Insert cables into cable covers.
Use cable clamp to limit cables close to steel pipe.



Technical Support Information techsupport@rosewill.com 1-800-575-9885
Please register your product at www.rosewill.com for complete warranty information and support for your product.



RMS-E51

Thank you for purchasing a Rosewill Monitor Desk Mount.
Please read the instruction manual before use and retain for future reference.



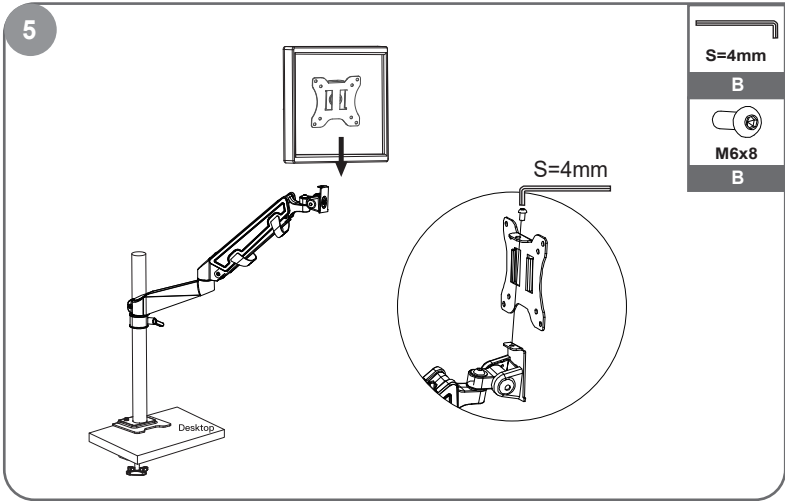
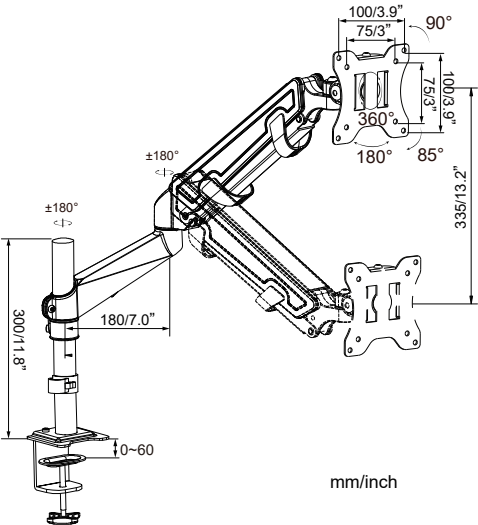
Installation **INSTRUCTIONS**

WARNING STATEMENTS

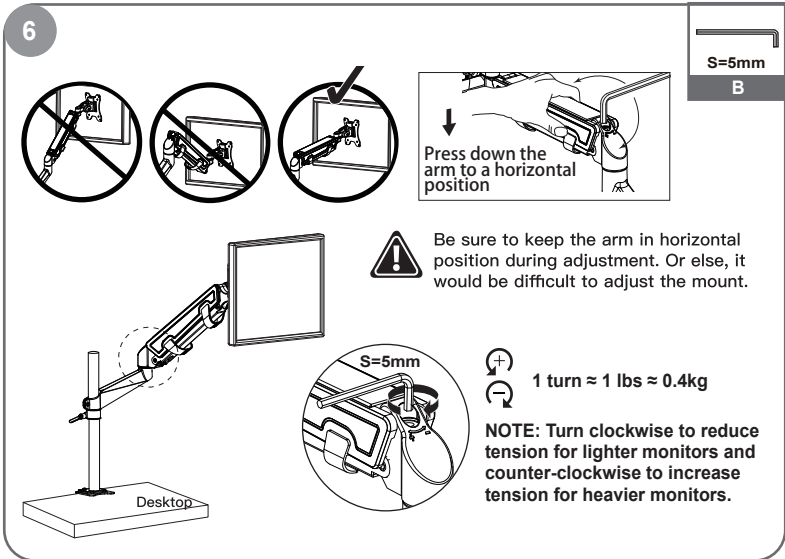
Warning

- ⚠ Prior to the installation of this product, the installation instruction must be read and completely understood. Failure to do so may result in personal injury, property damage or voiding of factory warranty.
- ⚠ Do not install on a structure that is prone to vibration, movement or chance of impact. Reinforce the structure as required before installation. Don't use the product on particle board.
- ⚠ The desk clamp can support a maximum thickness of 8.5 cm. Confirm the desk edge before installation.
- ⚠ Pay attention to the weight capacity of the mount. Exceeding the limitation can result in function unworkable or even serious personal injury and property damage.
- ⚠ Never operate the mount if parts are missing or damaged. Contact your local service center for warranty service.

PRODUCT LINE GRAPH



Insert the monitor along with the VESA plate to the arm and lock it.

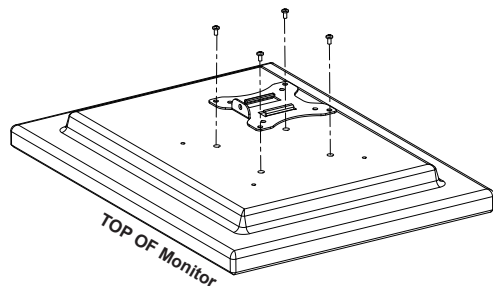


Use a 5mm hex wrench to adjust the height tension of the gas spring arm, to keep different weight of monitors still at any position.

4

For Flat Screen Monitors

Flush surface installation: Install 4 screws through faceplate to monitor via mounting holes.

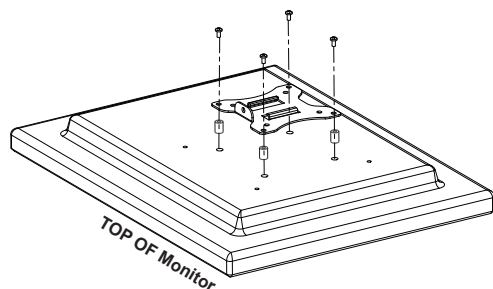


NOTE: Hand tighten screws to avoid over tightening.

OR

For Recessed/Curved Back Monitor

Recessed surface installation: Put 4 spacers between faceplate and monitor. Install 4 screws through faceplate, spacers to monitor via mounting holes.



NOTE: Hand tighten screws to avoid over tightening.

M4x12
A



M4x30
A

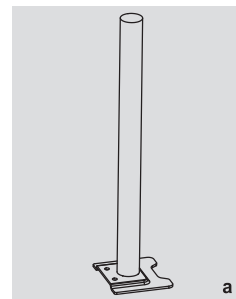
12X5.8X16
A



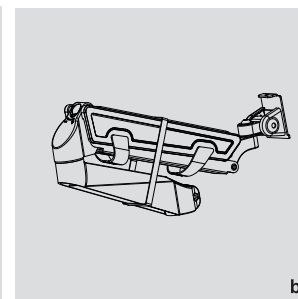
TOOLS REQUIRED NOT INCLUDED



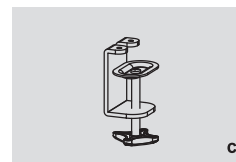
PARTS INCLUDED



a











b



c

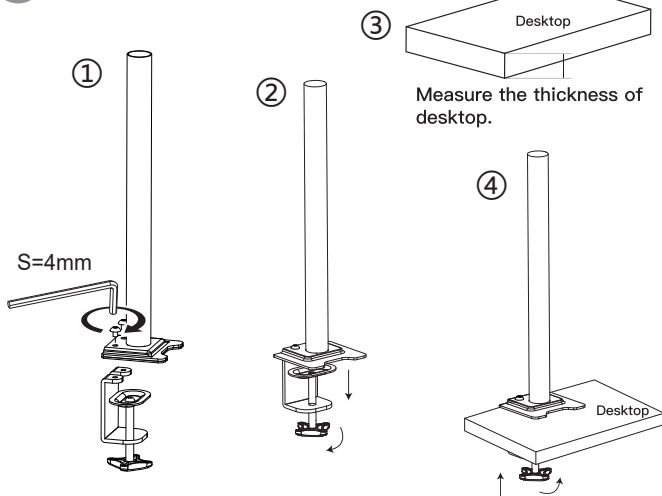


d

A	 M4x12 (x4)	 M4x30 (x4)	 12X5.8X16 (x4)
B	 S=4mm (x1)	 S=5mm (x1)	 M6x8(x3)
C	 (x1)		
D	 (x1)		

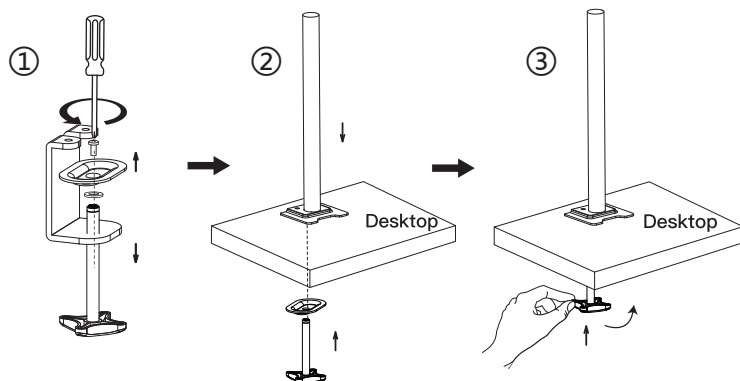
Clamp Installation Steps

1



OR Grommet Installation

⚠ Table clips are suitable for flat desktops, do not clip on slopes.



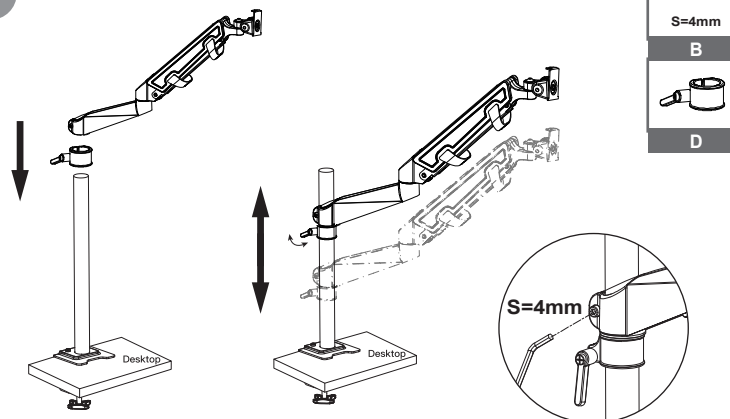
2



⚠ Warning: be careful on the sudden springback of the gas spring arm.

Tear off the cable tie and rebound carefully.

3



Insert the arms to the steel pipe above the locating ring.